

Content

Fleece wool 96%
Nylon 4%

Flame Resistance

California Technical
Bulletin 117
EN1021 1/2
British Standard 5852:
1990 Source 5 (crib 5)

Lightfastness

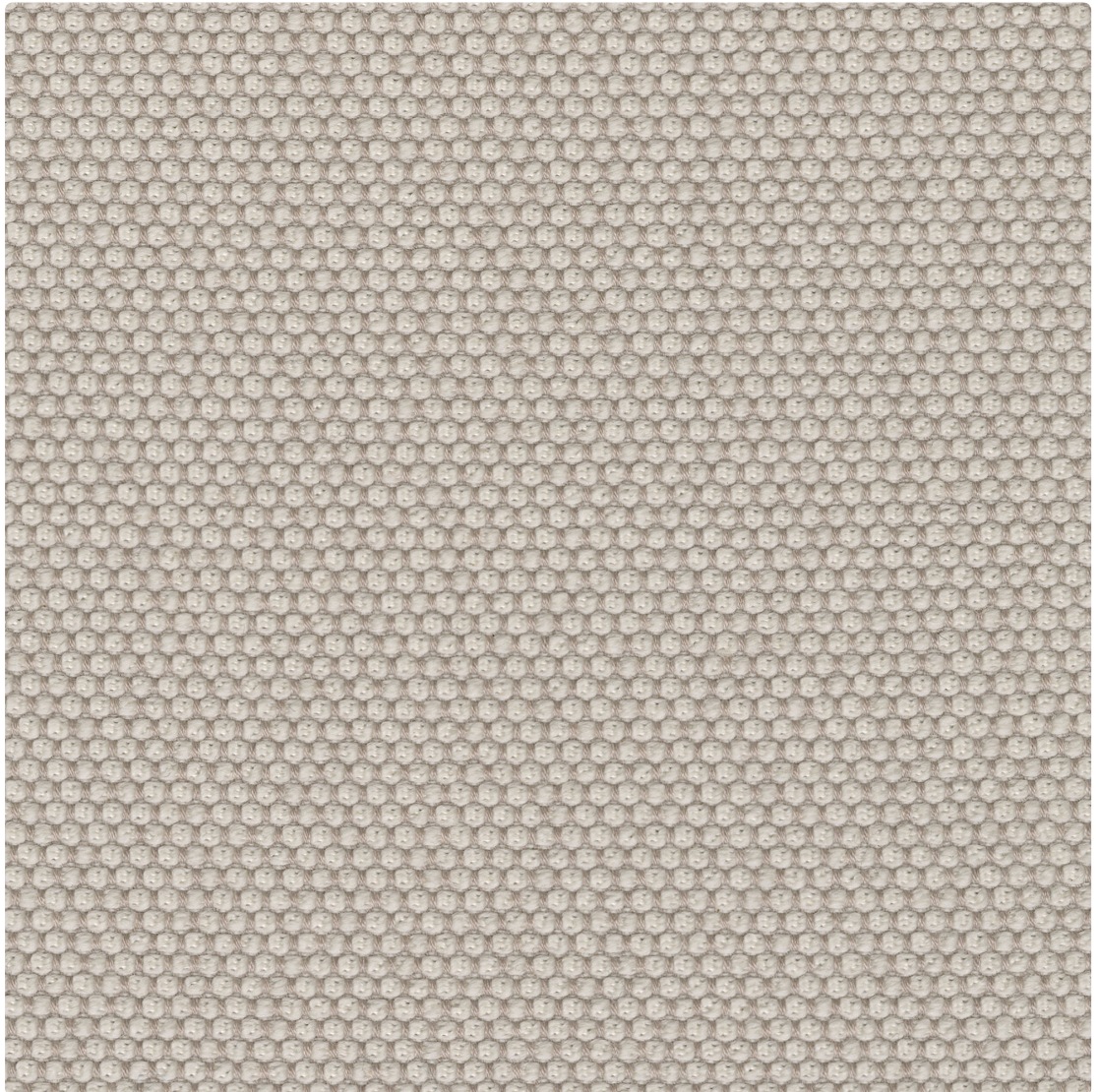
ISO 5/8

Abrasion

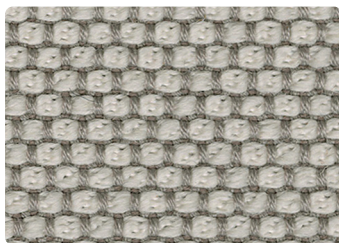
90,000 rubs
DIN EN ISO 12947-2

Maintenance

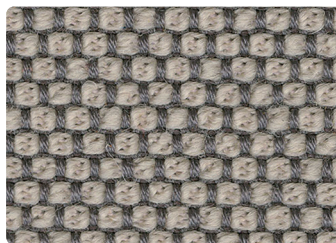
Clean with solvent-based
cleaning agent



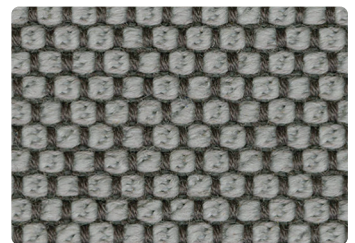
OP24 Calla



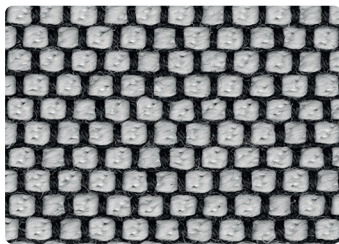
OP58 Macadamia



OP57 Flanell



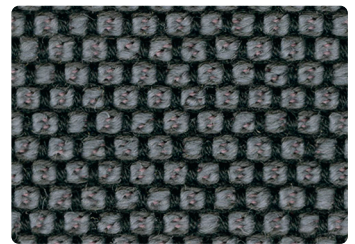
OP60 Fango



OP37 Pepper



OP18 Ebony



OP54 Carbon

Please use this sample card as indicative, only. It is provided as a guide.
There may be variations between this sample card and the real samples.

Content

Fleece wool 96%
Nylon 4%

Flame Resistance

California Technical
Bulletin 117
EN1021 1/2
British Standard 5852:
1990 Source 5 (crib 5)

Lightfastness

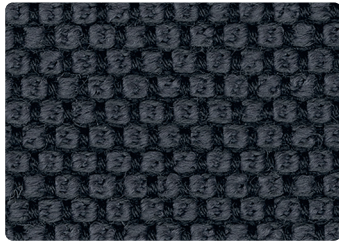
ISO 5/8

Abrasion

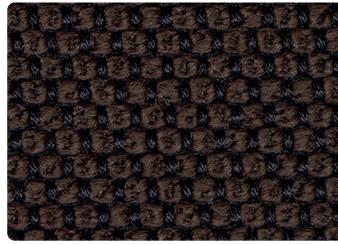
90,000 rubs
DIN EN ISO 12947-2

Maintenance

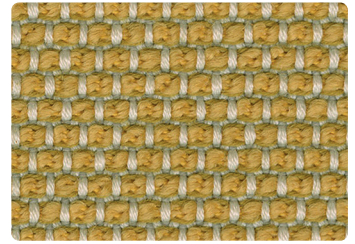
Clean with solvent-based
cleaning agent



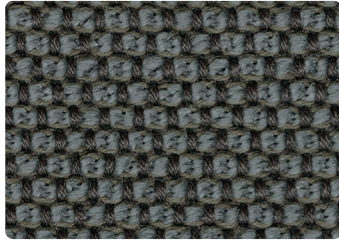
OP38 Anthrazit



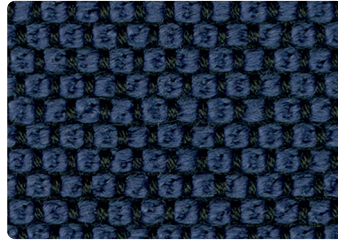
OP23 Rosewood



OP62 Aureo



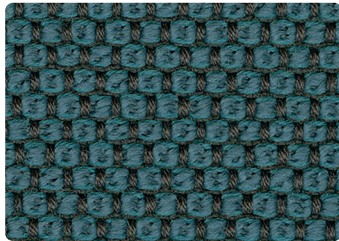
OP64 Prime



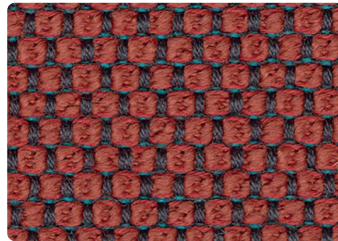
OP69 Delft



OP70 Navy



OP75 Delphi



OP71 Indio