

**Content**

Acetate 57%  
Polyester 37%  
Viscose 6%

**Flame Resistance**

California Technical  
Bulletin 117  
EN1021 1/2  
British Standard 5852:  
1990 Source 5 (crib 5)

**Lightfastness**

ISO 4/5

**Abrasion**

32,000 rubs  
Martindale method

**Maintenance**

Clean with solvent-based  
cleaning agent



001HER Ivory



003HER Light Taupe



021HER Powder



020HER Copper



029HER Moss



031HER Gold



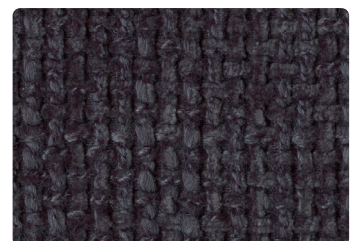
018HER Olive Green



016HER Emerald Green



024HER Sky/Blue



023HER Night Blue



011HER Dark Grey



012HER Grey

Please use this sample card as indicative, only. It is provided as a guide. There may be variations between this sample card and the real samples.